



WATER REPELLENT & ANTI-GRAFFITI TREATMENTS

KEIM MINERAL PAINTS

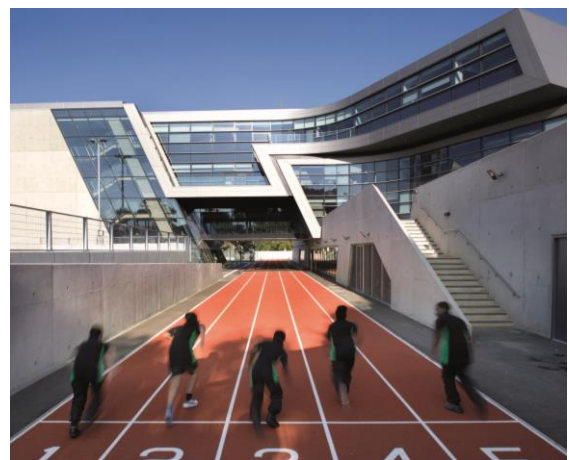
WATER REPELLENT TREATMENTS

KEIM LOTEXAN

KEIM Lotexan is a clear, siloxane based water repellent and dust suppressant treatment for use on alkaline mineral substrates such as concrete, render and brickwork.

When applied onto mineral surfaces, KEIM Lotexan soaks into the substrate and, having a small molecular size, coats the pores of the mineral structure without blocking them. A chemical reaction takes place, creating the water shedding properties of the siloxane, imparting excellent water repellence while maintaining moisture vapour permeability through the open pores.

KEIM Lotexan is a beneficial alternative to silicone which has a much larger molecular size and tends to fill the pores rather than coating them, reducing breathability and often sitting on the surface, creating a glossy or 'wet look' effect.



WATER REPELLENT TREATMENTS

KEIM LOTEXAN N

KEIM Lotexan N was developed as a dedicated generic variant of KEIM Lotexan for mineral substrates which have a lower alkalinity, such as weathered natural stone.

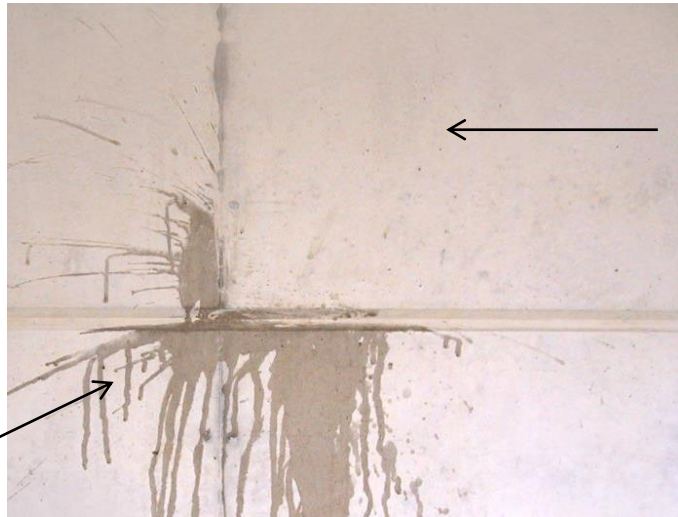


KEIM ECOTEC

KEIM Ecotec is an environmentally friendly, solvent free, colourless water repellent and dust suppressant. KEIM Ecotec is a concentrated hydrophobing silicone micro-emulsion, diluted with water, which reduces water absorption



KEIM LOTEXAN IN PRACTICE



KEIM Lotexan (Sample Area)

Untreated Concrete



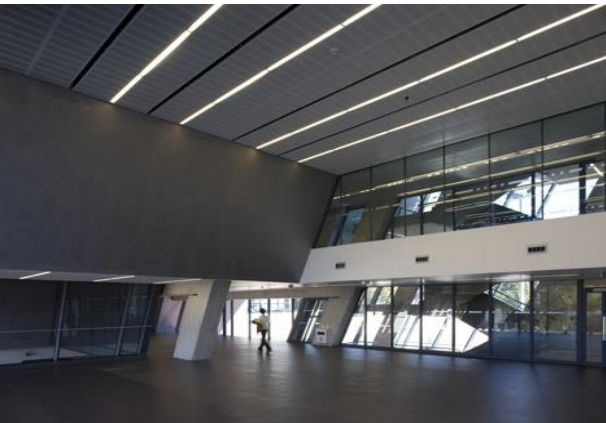
Persistence Works, Sheffield – Photographs courtesy of Feilden Clegg Bradley Studios

WATER REPELLENT TREATMENTS



KEIM Water-repellent products have been used on many high profile buildings including:

- Portcullis House, London on page one (bottom left)
- St Malachys Church Belfast, Grade A Listed Building on page two (bottom left)
- Language Centre, Derry also on page two (top right)
- Scottish Parliament Building also on page two (bottom right)
- Stirling Prize Winning Evelyn Grace Academy, Brixton, London (both left)
- Grade II* Listed Apollo Passmore Pavilion Peterlee (bottom)
- Stirling Prize Winning Sainsbury's Laboratory, Cambridge.



ANTI GRAFFITI TREATMENTS – SACRIFICIAL

KEIM 694 WAX COATING

KEIM Wax Coating is suitable for all mineral surfaces and for surfaces which have been treated with KEIM Mineral Paints.

The product is made with polymers and synthetic water-based wax and is designed to be easily removed and re-applied.

Graffiti can be removed using a high pressure sprayer or by using KEIM Wax Coating Graffiti Cleaner.

Used below on the Chester Amphitheatre Mural (left) and decoration at Stourbridge Canal (right) to protect the applied KEIM Mineral Paints from potential graffiti damage.

KEIM Wax Coating has a low sheen finish and does not significantly darken the surface to which it is applied.



ANTI GRAFFITI TREATMENTS – PERMANENT

KEIM MX GLAZE

KEIM MX Glaze is an engineered siloxane coating that embodies the properties of both a high performance epoxy and a polyurethane in one coat.

KEIM MX Glaze provides a general purpose high gloss, clear coating which has good weathering and wear resistance properties.

The finish provides a wipeable, durable surface that has excellent anti-graffiti properties and is suitable for all mineral substrates.

KEIM MX Glaze can be applied over applied KEIM Mineral Paints to provide anti-graffiti protection.

Below: Left hand side of panels coated in KEIM MX Glaze – can be easily cleaned and graffiti removed without damage to the coating or substrate.





KEIM MINERAL PAINTS LTD.

Santok Building, Deer Park Way, Donnington Wood
Telford, Shropshire, TF2 7NA

01952 231250 / www.keimpaints.co.uk / sales@keimpaints.co.uk

KEIM. COLOURS FOR EVER.